

NATURAL RESOURCES OF THE DOMINION OF CANADA.

Owing to the wonderful system of lake reservoirs the variations of water-flow on the Niagara river and the St. Lawrence river are remarkably small. They are believed to be less than on any other river system in the world. Referring to this natural regulation of water-flow, the International Waterways Commissioners in their report for the year 1910 said: "No work of man ever approached or ever will approach this perfection of regulation."

As might be expected, more exact information is obtainable regarding the large water-powers than about the small water-powers. In the older settled parts of the eastern provinces most of the small water-powers were utilized from the earliest days of settlement to run saw

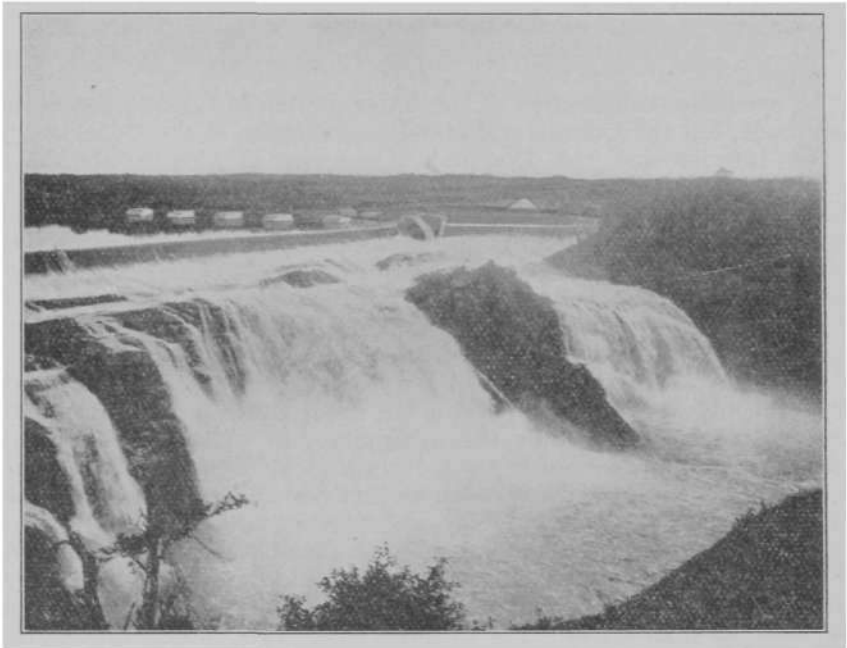


FIG. 1. CHAUDIÈRE FALLS, CHAUDIÈRE RIVER, PROVINCE OF QUEBEC.

mills, grist mills and woollen factories. The methods adopted for the utilization of the water-powers were primitive, and in many cases little or no alteration has been made. The estimates regarding most of these small water-powers are based on the development under such conditions. It is probable that, in the future, modern engineering skill will be employed in reconstruction work at some of these small water-powers, and that the power developed will be considerably increased. On the other hand at some of these small water-powers the full power already developed is not available at lowest water, and in some cases no power at all is available at certain seasons of the year. But the little water-powers form a very small proportion of the total.